

ROYAL SYDNEY SHOW 2008 RESULTS

Judge: Shane Paulger, Kenilworth Queensland



Jason Sutherland International Animal Health with Brad (middle) and Adrian Gavenlock, Berri NSW stand with the Junior Champion Jersey heifer.



Reserve Junior Champion heifer being sashed by Jason Sutherland International Animal Health and paraded by Hayley Boyd.



Senior Champion Jersey Cow with judge Shane Paulger and Kevin Heally International Animal Health and the owners of the cow Lyn and David Boyd Finley NSW at the Sydney show 2008.



Judge Shane Paulger (left) Kenilworth Qld, holds the Reserve Senior Champion Cow sash with Kevin Heally International Animal Health. Owner, Hayley Boyd Nowra stands alongside Lisa Thompson, Tasmania at the halter.

CLASS: 602 Heifer, over 18mths and not over 2yrs

- 369 MR M & R WILSON
JAMBEROO NSW 2533
JAMBER JADE LADY (R2W 2)
- 306 T WILSON
GLOUCESTER NSW 2422
AVON VALLEY COUNTRY CAROL (AVW 1)
- 303 DR J W QUIN
MENANGLE NSW 2568
ORANA FANCY SERENADE (JWQ 285)

CLASS: S603 JUVENILE CHAMPION FEMALE

- Winner 369 MR M & R WILSON
JAMBEROO NSW 2533
JAMBER JADE LADY (R2W 2)

CLASS: S604 RESERVE JUVENILE CHAMPION FEMALE

- Winner 298 S MENZIES & H BOYD
NUMBAA NSW 2540
BRUNCHILLI NIX CHER (BRG 1960)

HONOURABLE MENTION

- BRUNCHILLI FARMING TRUST
FINLEY NSW 2713
BRUNCHILLI JURA LORETTA (BRG 2048)

CLASS: 606 Female, over 2 and not over 3yrs, in calf, dry

- 313 DR J W QUIN - MENANGLE NSW 2568
ORANA HALLMARK ILAGA-/4 HC+ (JWQ 243)
- 314 ROBERT & SANDRA BROWN - FITZROY FALLS NSW 2570
FOXTON BIG TIME MELYS (FOX 31)
- 311 CC & J COCHRANE
NOWRA NSW 2541
PARRABEL CONNECT DELIGHT (RC2613)

CLASS: 607 Female, under 2yrs 4 mths, in milk

- 318 MR B GAVENLOCK
BERRY NSW 2535
INGALALA ASTOAND JANETTE (DJR 3795)
- 319 BRUNCHILLI FARMING TRUST - FINLEY NSW 2713
BRUNCHILLI FLOWER REBECCA (BRG 1863)
- 307 DR J W QUIN
MENANGLE NSW 2568
ORANA LEGION SUNSHINE (JWQ 276)
- 315 DR J W QUIN - MENANGLE NSW 2568
ORANA FESTIVAL NARCISSUS (JWQ275)

CLASS: 608 Female, 2yr 4 mths & under 2yrs 8 mths, in milk

- 322 S MENZIES & H BOYD
NUMBAA NSW 2540
BRUNCHILLI SAMBO EILEEN 3RD (BRG 1626)
- 323 MR B GAVENLOCK
BERRY NSW 2535
INGALALA MAX MARLENE (DJR 3765)

CLASS: 609 Female, 2yr 8 mths & not over 3yrs, in milk

- 324 MR M & R WILSON
JAMBEROO NSW 2533
BURNSIDE SAMBO DAWN (MMW1048)

- 327 ROBERT & SANDRA BROWN - FITZROY FALLS NSW 2570
FOXTON FUROR PAM (FOX 34)
- 326 DR J W QUIN
MENANGLE NSW 2568
ORANA SAMBOS SUNSHINE HC+ (JWQ 244)

CLASS: S610 BEST JUNIOR UDDER - Female, not over 3yrs with the Best Udder

- MR B GAVENLOCK
BERRY NSW 2535
INGALALA ASTOAND JANETTE (DJR 3795)

CLASS: S611 JUNIOR CHAMPION FEMALE

- MR B GAVENLOCK
BERRY NSW 2535
INGALALA ASTOAND JANETTE (DJR 3795)

CLASS: S612 RESERVE JUNIOR CHAMPION FEMALE

- S MENZIES & H BOYD
NUMBAA NSW 2540
BRUNCHILLI SAMBO EILEEN 3RD (BRG 1626)

HONOURABLE MENTION

- MR M & R WILSON JAMBEROO NSW 2533
BURNSIDE SAMBO DAWN (MMW1048)

CLASS: 614 Three Females, not necessarily by the one sire, not over 3yrs

- 332 DR J W QUIN
MENANGLE NSW 2568
- 330 BRUNCHILLI FARMING TRUST - FINLEY NSW 2713
- 329 MR B GAVENLOCK
BERRY NSW 2535

Highest total kgs fat plus protein in Class 615

- ROBERT & SANDRA BROWN - FITZROY FALLS NSW 2570
FOXTON MALCOLMS CHARM (FOX 001)

CLASS: 616 Female, over 3 and not over 4yrs, in milk

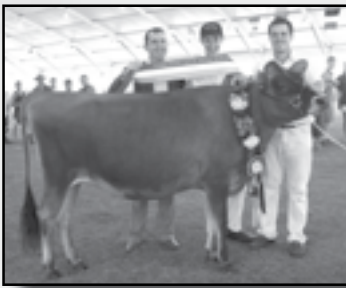
- 334S MENZIES & H BOYD
NUMBAA NSW 2540
BRUNCHILLI SAMBOS DAINTY (BRG 1545)
- 342 MR M & R WILSON
JAMBEROO NSW 2533
BURNSIDE POWERS SILVERFLOWER (MMW1039)
- 335 BRUNCHILLI FARMING TRUST - FINLEY NSW 2713
BRUNCHILLI BC EILEEN (BRG 1525)

CLASS: S616C Highest total kgs fat plus protein in Class 616

- CEDAR VALE JERSEYS - GERRINGONG NSW 2534
MISTY GLEN FLOWER POWER REGAL HC+ 88 (CTJ 318)

CLASS: 617 Female, over 4 & not over 5yrs, in milk

- 343 DR J W QUIN
MENANGLE NSW 2568
ORANA GOLDEN SILVERFINCH VHC (JWQ 211)
- 344 BRUNCHILLI FARMING TRUST
FINLEY NSW 2713
BRUNCHILLI JW JESSIE (BRG 1428)
- 346 ROBERT & SANDRA BROWN
FITZROY FALLS NSW 2570
FOXTON SAMBOS DORIS (FOX 009)



Aaron Bett, NAB Nowra and Rod Wilson, Jamberoo, NSW with his Supreme Champion All Breeds Juvenile heifer lead by Cameron Bowden Longford Tasmania.

- 4 345 DR J W QUIN
MENANGLE NSW 2568
ORANA HALLMARK ILAGAY2HC+
(JWQ 200)

CLASS: S617B Highest total kgs fat plus protein in Class 617

- 343 DR J W QUIN
MENANGLE NSW 2568
ORANA GOLDEN SILVERFINCH VHC
(JWQ211)

CLASS: 618 Female, over 5 & not over 6yrs, in milk

- 1 349 C C & J COCHRANE & C ALLEN
NOWRA NSW 2541
MISTY GLEN FIRECRACKERS GEM
(CTJ193)
- 2 351 CEDAR VALE JERSEYS
GERRINGONG NSW 2534
SHIRLINN MISS PET VHC 91
(LAW 1283)
- 3 348 BRUNCHILLI FARMING TRUST
FINLEY NSW 2713
BRUNCHILLI SAMBO NOELENE
(BRG 1371)

CLASS: S618C Highest total kgs fat plus protein in Class 618

- 351 CEDAR VALE JERSEYS
GERRINGONG NSW 2534
SHIRLINN MISS PET VHC 91
(LAW 1283)

CLASS: 619 Female, over 6yrs, in milk

- 1 353 BRUNCHILLI FARMING TRUST
FINLEY NSW 2713
BRUNCHILLI J PASSION (BRG 1307)
- 2 355 BUNDABERG JERSEYS
COBARGO NSW 2550
KAMERUKA SOUEREIGN 167TH (K 1717)
- 3 352 MR B GAVENLOCK
BERRY NSW 2535
BROOKLYN FARM JADES TINEY (BF 1)

CLASS: S620 BEST SENIOR UDDER - Female over 3yrs, with the Best Udder

- 353 BRUNCHILLI FARMING TRUST
FINLEY NSW 2713
BRUNCHILLI J PASSION (BRG 1307)

CLASS: 621 Three females, any age, not necessarily by the one sire

- 1 356S MENZIES & H BOYD
NUMBAA NSW 2540
- 2 357 BRUNCHILLI FARMING TRUST -
FINLEY NSW 2713
- 3 360 DR J W QUIN
MENANGLE NSW 2568

CLASS: 622 DAM'S PROGENY GROUP

- 1 361 DR J W QUIN
MENANGLE NSW 2568
ORANA HALLMARK ILAGA-/4 HC+

CLASS: S624 SENIOR CHAMPION FEMALE

- 353 BRUNCHILLI FARMING TRUST
FINLEY NSW 2713
BRUNCHILLI J PASSION (BRG 1307)

— JerseyJournal June / July 2008



Shane Paulger walks the Best Vessel line up at Sydney 2008.

CLASS: S625 RESERVE SENIOR

- CHAMPION FEMALE**
334 S MENZIES & H BOYD
NUMBAA NSW 2540
BRUNCHILLI SAMBOS DAINTY (BRG 1545)

HONOURABLE MENTION

- 355 BUNDABERG JERSEYS
COBARGO NSW 2550
KAMERUKA SOUEREIGN 167TH (K 1717)

CLASS: S706 INTERBREED SUPREME CHAMPION DAIRY FEMALE

- BRUNCHILLI FARMING TRUST
FINLEY NSW 2713
BRUNCHILLI J PASSION (BRG 1307)

The Dairy Farmers Supreme Champion Perpetual Trophy, donated by Dairy Farmers

- BRUNCHILLI FARMING TRUST
FINLEY NSW 2713
BRUNCHILLI J PASSION (BRG 1307)

Cash prize for the Supreme Champion Dairy Female, supported by Dairy Farmers

- BRUNCHILLI FARMING TRUST
FINLEY NSW 2713
BRUNCHILLI J PASSION (BRG 1307)

CLASS: S700 SUPREME JUVENILE CHAMPION DAIRY FEMALE

- MR M & R WILSON
JAMBEROO NSW 2533
JAMBER JADE LADY (R2W 2)

CLASS: S701 SUPREME JUNIOR CHAMPION DAIRY FEMALE

- MR B GAVENLOCK -
BERRY NSW 2535
INGALALA ASTOAND JANETTE
(DJR 3795)

Wesfarmers Federation Insurance Perpetual Shield for the Supreme Junior Champion Dairy Female donated by Wesfarmers Federation Insurance

- MR B GAVENLOCK
BERRY NSW 2535
INGALALA ASTOAND JANETTE
(DJR 3795)

CLASS: S711 MOST SUCCESSFUL EXHIBITOR

- BRUNCHILLI FARMING TRUST
FINLEY NSW 2713

BEST DISPLAYED JERSEY TEAM, two to five head

- 288 P BUCKLEY
THERESA PARK NSW 2570

BEST DISPLAYED JERSEY TEAM, over five head

- BRUNCHILLI FARMING TRUST
FINLEY NSW 2713



Brad Gavenlock at the halter and Ray Sawtell, Cobargo NSW holds the Junior Best Udder sash while judge Shane Paulger looks on.



John Bywater Dairyfarmers, Sydney with the exhibitors Lyn boyd and son David with their Supreme Champion Dairy Cow.



David Boyd Finley, NSW at the halter of the Best Senior Udder winner at Sydney 2008. Sponsor Susan Bower, NAB Singleton holds the sash.



Junior Champion Interbreed heifer at Sydney Royal Show 2008 with Aaron Bett NAB and Susan Bower NAB with Brad and Adrian Gavenlock the owners of the cow.